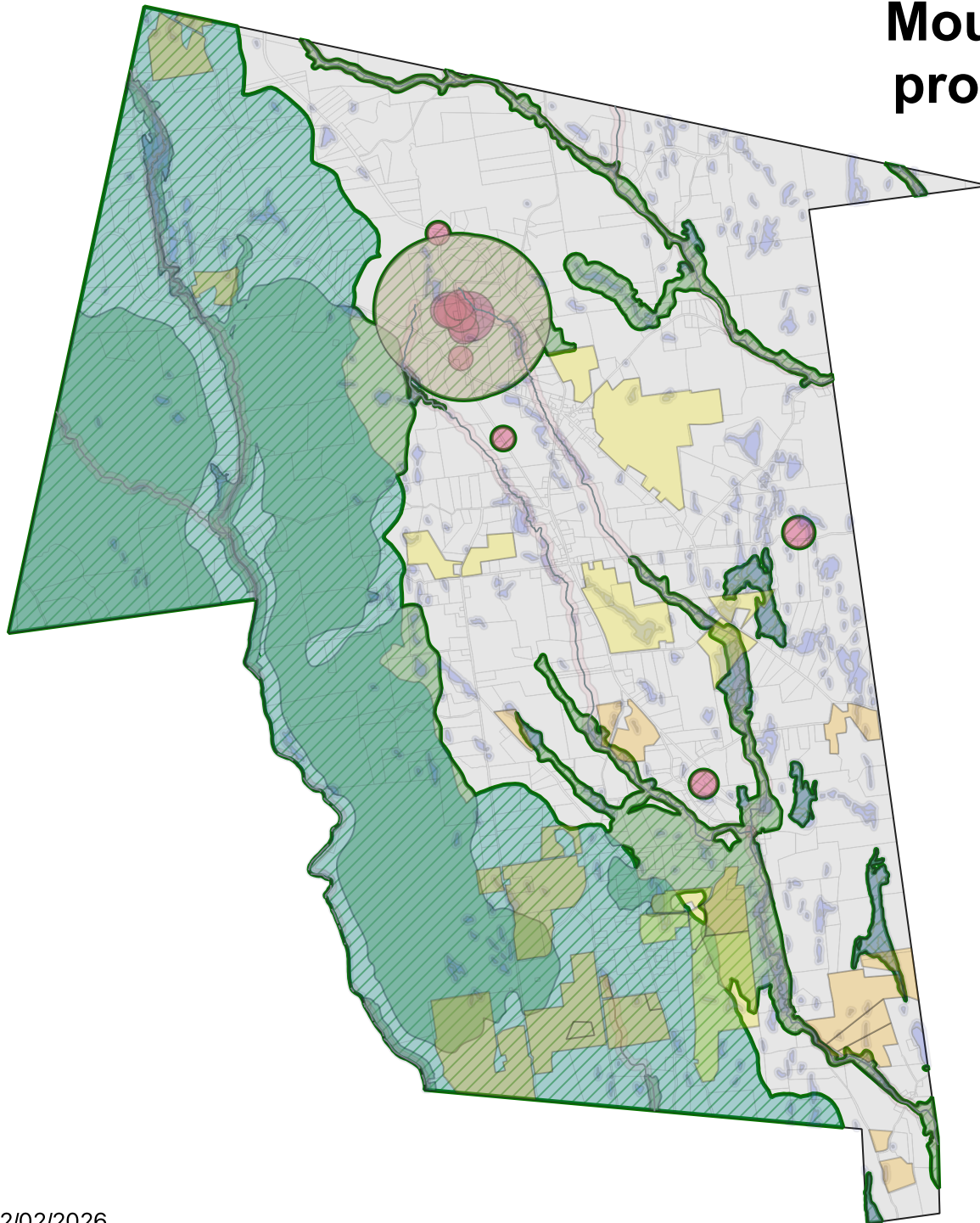


Area protected from Large Scale Ground Mounted Solar Installations under proposed temporary moratorium.



Wellhead Protection

- Water Supply Protection District (approximate)
- Interim Wellhead Protection Areas (All Public Water Supplies)

Outstanding Resource Water

BioMap3

Core Habitat

Protected / Unprotected

- Features Protected by proposed moratorium
10,878 acres (52.9%)
- Unprotected
9,668 acres (47.1%)

Total acres in Worthington: 20,546

Protected in Other Ways

Land Use Restrictions

- Agricultural Preservation Restriction
- Conservation Restriction

Wetlands

- Waterways - Buffered 200'
- Wetlands - Buffered 100'