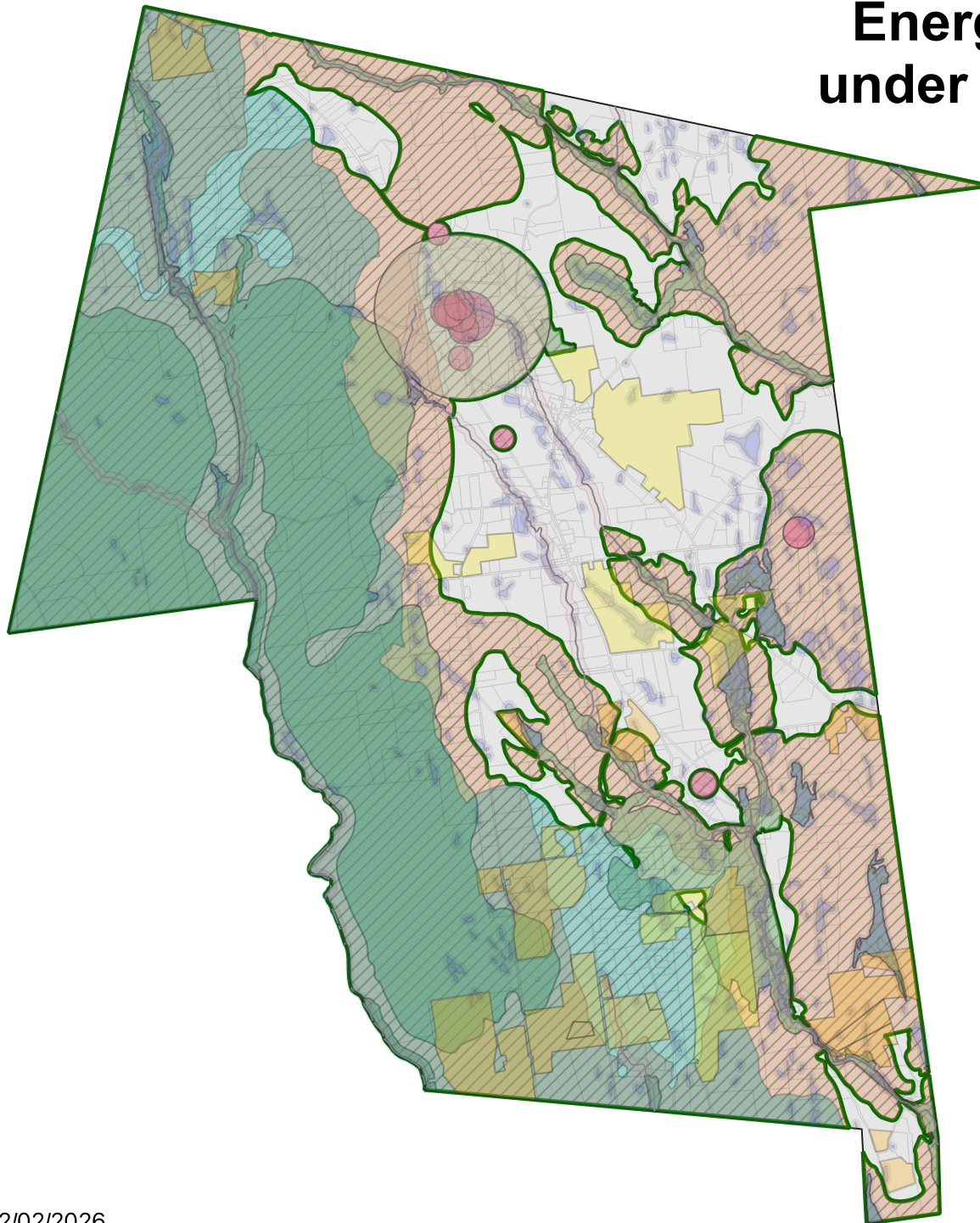


Area protected from Large Capacity Energy Storage System Installations under proposed temporary moratorium



Wellhead Protection

- Water Supply Protection District (approximate)
- Interim Wellhead Protection Areas (All Public Water Supplies)

Outstanding Resource Water

BioMap3

- Core Habitat
- Critical Natural Landscape

Protected / Unprotected

- Features Protected by Proposed Moratorium
16,036 acres (78.0%)
- Unprotected
4,510 acres (22.0%)

Total acres in Worthington: 20,546

Protected in Other Ways

Land Use Restrictions

- Agricultural Preservation Restriction
- Conservation Restriction

Wetlands

- Waterways - Buffered 200'
- Wetlands - Buffered 100'