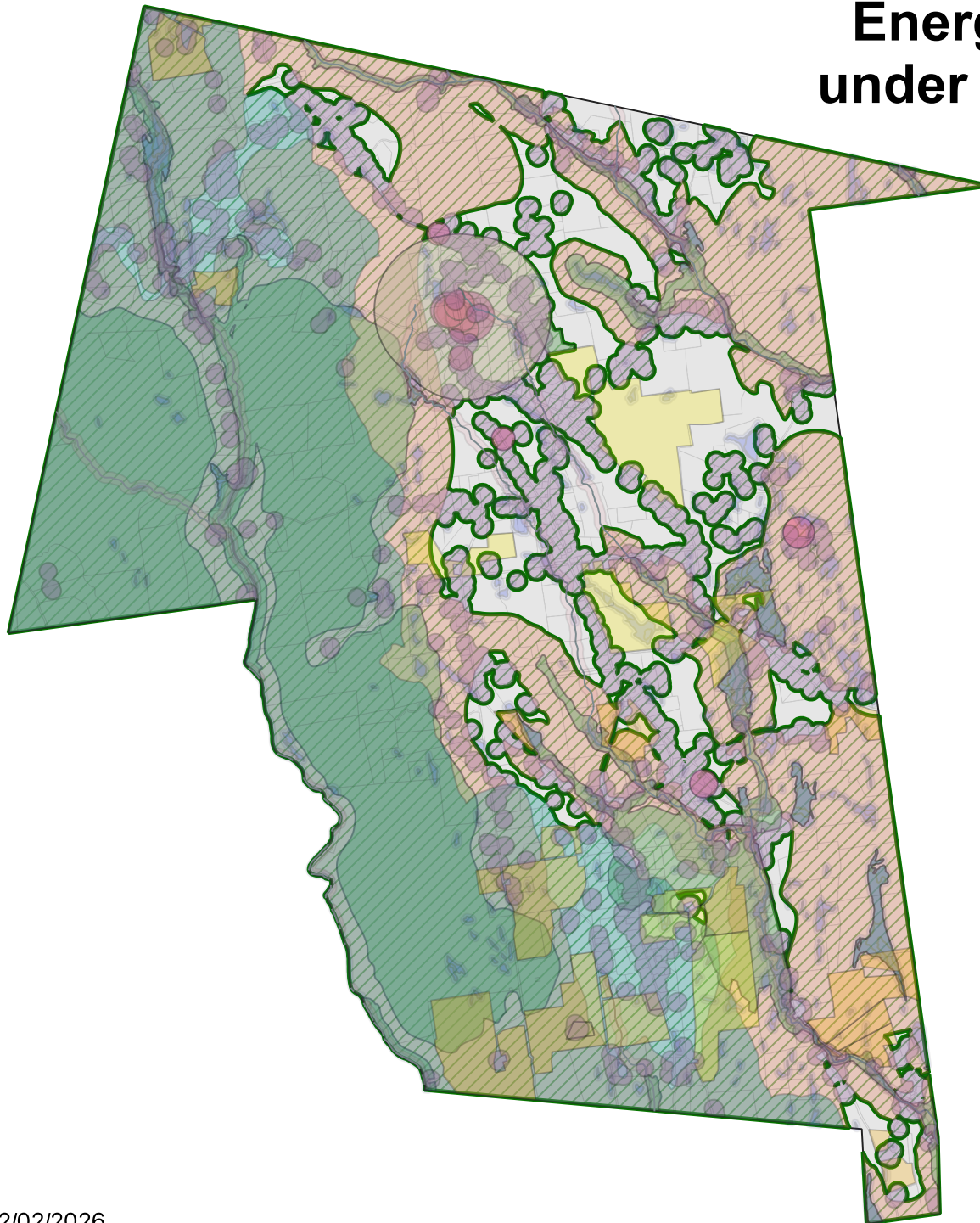


Area protected from Large Capacity Energy Storage System Installations under proposed temporary moratorium (including 300' setback)



Wellhead Protection

- Water Supply Protection District (approximate)
- Interim Wellhead Protection Areas (All Public Water Supplies)

- Outstanding Resource Water
- 300' Setback from all structures

BioMap3

- Core Habitat
- Critical Natural Landscape

Protected / Unprotected

- Unprotected
2,667 acres (13%)
- Features Protected by Proposed Moratorium
17,879 acres (87%)

Total acres in Worthington: 20,546

Protected in Other Ways

Land Use Restrictions

- Agricultural Preservation Restriction
- Conservation Restriction

Wetlands

- Waterways - Buffered 200'
- Wetlands - Buffered 100'