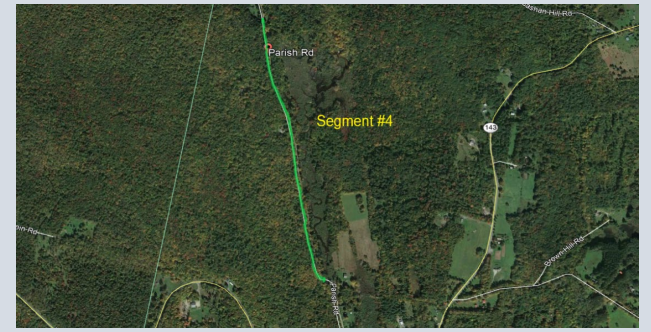


Worthington Non Served Areas

4/25/2019

Node Areas	Segment Number	Street Name	Location description	Aerial Mileage	UG Mileage	Total Miles	Residential Passings	Long Drops	Commercial Passings	Total Passings	OSP Cost	ISP & Engineering Cost	Make Ready Estimate	Total Cost
N/A	1	Bashan Hill Road	Bashan Hill Road - Extend plant from the intersection of Bashan Hill Road and Old North Road northeasterly for 33 spans and approximately 6,124' to feed 4 homes.	1.16	0.00	1.16	4	0	0	4	\$ 40,934.65	\$ 4,000.00	\$ 14,674.40	\$ 59,609.05
N/A	2	Fisk Road	Fisk Road - Extend plant from pole #2 south for 8 spans and approximately 2,076' to feed 1 home.	0.39	0.00	0.39	1	0	0	1	\$ 13,876.61	\$ 2,000.00	\$ 4,974.54	\$ 20,851.14
N/A	4	Parish Road	Parish Road - Extend plant from pole # 9 on Parish Road north for 18 spans and approximately 4,270' to feed 4 homes.	0.81	0.00	0.81	4	0	0	4	\$ 28,541.96	\$ 6,000.00	\$ 10,231.83	\$ 44,773.78
N/A	5	Rida Rd	Rida Road - Extend plant from pole # 4/5 north for 2 spans and approximately 651' to feed 1 home	0.12	0.00	0.12	1	0	0	1	\$ 4,351.48	\$ 2,000.00	\$ 1,559.93	\$ 7,911.41
N/A	6	River Road	River Road - Extend plant from pole # 31/31 south for 10 spans and approximately 2,138' to feed 2 homes. Note: 485 River Road is a long drop and will require 523' of aerial cable.	0.40	0.00	0.40	1	1	0	2	\$ 14,291.03	\$ 2,000.00	\$ 5,123.10	\$ 21,414.13
N/A	7	Sam Hill Road	Sam Hill Road - Extend plant from pole #35/34 southwest for 13 spans and approximately 2,473' to feed 1 home.	0.47	0.00	0.47	1	0	0	1	\$ 16,530.27	\$ 2,000.00	\$ 5,925.83	\$ 24,456.10
		Total Cost		3.36	0.00	3.36	12	1	0	13	\$ 118,525.99	\$ 18,000.00	\$ 42,489.63	\$ 179,015.63



Note: Maps are for illustration purposes only.