
Regional Open Space

The Worthington region is rich with permanently protected open space. Most of this protected open space is adjacent to the waterways that run through the region.

The Chapter 61 program temporarily protects lands. These lands, used for recreation, forestry, or agriculture, provide habitat and open space.

Cooperation between municipalities in the region will help to maintain links between protected land and maintain the region's valuable biodiversity.

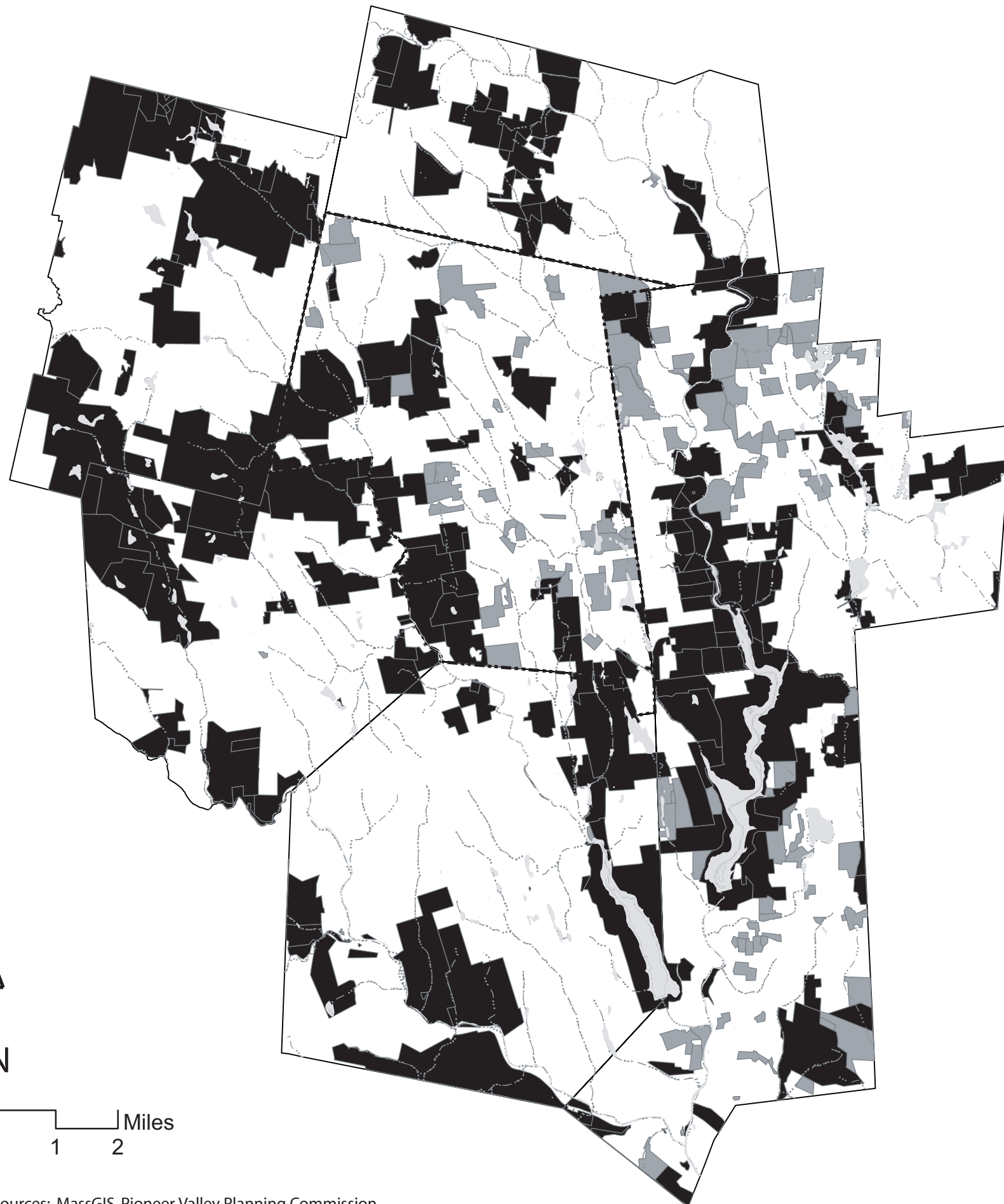
Level of Protection


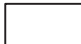


Temporarily Protected Lands

Lands temporarily protected by Chapter 61 provide valuable connections between permanently protected areas.

Permanently Protected Lands

Most of these lands are owned by the Commonwealth. The remaining are owned either by the towns, or nonprofits, or are conserved under the APR or CR programs.



-  Surface Waters
-  Regional Boundary
-  Rivers
-  Town Boundary

Worthington, Massachusetts 2006 Open Space and Recreation Plan Update

Conway School of Landscape Design

John Bisbing - Janna Thompson - Ian Warner

March 2006

Note: This map is intended for planning purposes only.

0 1 2 Miles

Sources: MassGIS, Pioneer Valley Planning Commission